



 *townsend*<sup>®</sup>  
LEATHER

# BY DESIGN

 A periodical from Townsend Leather



# BY DESIGN

A periodical from Townsend Leather

**Townsend Leather crafts leather, *by design.***

**We live our team culture, *by design.***

**We work to meet every customer's needs, *by design.***

Here is your periodical snippet of the designed focuses of Townsend Leather.

**WE LOVE TO CONNECT, DISCUSS, AND EXPLORE -  
PLEASE CONTACT US ABOUT ANYTHING YOU SEE HERE  
OR ANY QUESTIONS, IDEAS, OR INSPIRATION THAT COMES FROM IT.**

**WWW.TOWNSENDLEATHER.COM**

TOWNSEND LEATHER  
P.O. BOX 669  
4 GROVE STREET  
45-49 TOWNSEND AVENUE, JOHNSTOWN, NY 12095  
INFO@TOWNSENDLEATHER.COM  
518.762.2764





# CONTENTS

Click to jump to:

- **NEW PRODUCTS**
- **SPOTLIGHT**
- **AT TOWNSEND**
- **SEEN**

Or scroll for it all





# NEW NEW

## STACY GARCIA® BLUE LABEL SAHARA COWHIDE

*A gorgeous leather with a supple hand, rustic character, and an embossed grain as untamed and winding as the desert sands. Sahara features a matte tonal tipping that world and design.*

ORDERSAMPLES





# STACY GARCIA® BLUE LABEL EMBER COWHIDE

*A touch as soft as velvet, embodying a sense of warmth and refinement. The satin finish breathes life into the leather, radiating an understated glow that transforms as light dances across its surface.*

ORDER SAMPLES





# LEATHER ESSENTIALS - *NEW COLORS*

*New colors added to our Leather Essentials collection, a contemporary color palette hand-tipped with subtle metallic pigments to bring embossed patterns to life.*

**ORDER SAMPLES**





# SHIMMERING SUEDE BRUSHSTROKES COWHIDE

*Foil transfer providing just the right amount of textural interest and shimmer. A subtle and exquisite beauty ready for your hands.*

**ORDER SAMPLES**





# STACY GARCIA® BLUE LABEL ARDEN WEAVE COWHIDE

*Intricate basketweave design weaving a story of timeless elegance, offering a tactile experience both rich and captivating. This leather designed by Stacy Garcia® creates an interplay of light and shadow, adding depth to any setting and pairs perfectly with the new Stacy Garcia® Blue Label Ember Cowhide.*

**ORDER SAMPLES**





# STACY GARCIA® BLUE LABEL GRANDEUR COWHIDE

*Embossed with a linear pattern that is expertly highlighted with tone-on-tone hues in a timeless neutral color palate, the Stacy Garcia® designed Grandeur Cowhide's embracing of clean lines, craftsmanship, and quality creates a leather that is the epitome of sophistication*

**ORDER SAMPLES**





# PANTONE COLOR OF THE YEAR - MOCHA MOUSSE

*Delicious and comforting, Mocha Mousse inspired leathers give elegance and subtle warmth to an environment. We offer custom sampling packages to fit any pattern, theme, or color – even the Pantone Color of the year. As the manufacturer, we create close to 6,000 custom strike-offs a year and are able to pull from those to send overnight packages of any grouping of leather to fit your exact design needs.*

Color of  
the Year  
2025

PANTONE®  
Mocha Mousse  
17-1230

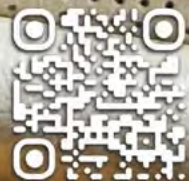




DESIGNING WITH TOWNSEND LEATHER,  
THE SKY'S THE LIMIT



[WWW.TOWNSENDLEATHER.COM](http://WWW.TOWNSENDLEATHER.COM)





# spotlight

## Celebrating 55 Years

*For 55 years Townsend Leather has been making the worlds finest leather, in the same building(s) and with the same guiding principles. We celebrated our 55th birthday this past year with a carousel ride, both metaphorically, as we wound our way through history and stories together, and literally, as we laughed and spun and took time to share joy.*

[townsendleather.com/55-years](http://townsendleather.com/55-years)





 **townsend**<sup>®</sup>  
LEATHER

est 1969  55 years

# THE SKY'S THE LIMIT

*Celebrating*  
**55 years**  
of a love of leather  
& limitless craft







est. 1969

55 years

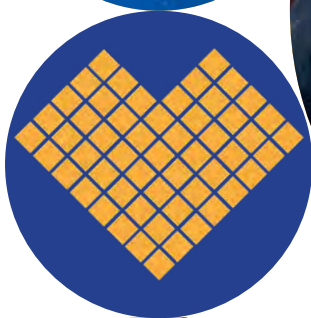
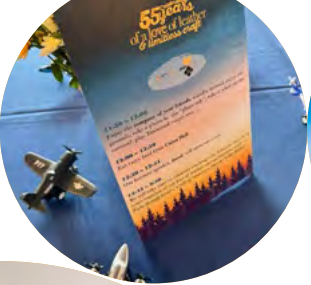


**CELEBRATING 55 YEARS**  
OF A LOVE OF LEATHER & LIMITLESS CRAFT  
WITH TOWNSEND LEATHER  
**THE SKY'S THE LIMIT**

[WWW.TOWNSENDLEATHER.COM](http://WWW.TOWNSENDLEATHER.COM)









55 YEARS

# CELEBRATING OUR HISTORY

55 years celebrating a love of leather and limitless craft.

55 diamonds, 55 years, 55 moments of craft of love of leather. Townsend Leather is 55 years old this year, founded in 1969, and still hungry for the future – we are celebrating and honoring a love of leather and limitless craft.

1969

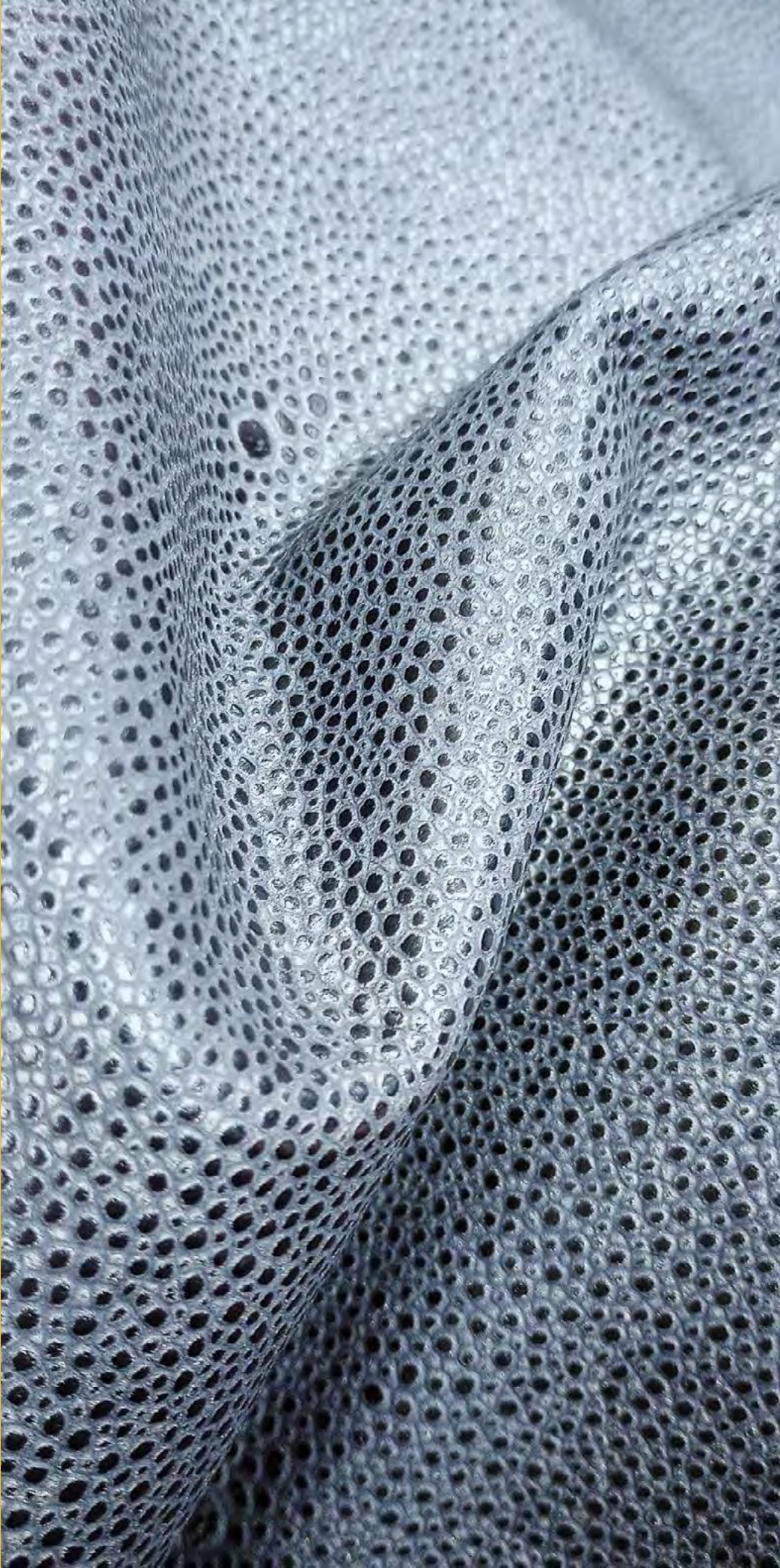
2024



STITCHING TOGETHER OUR PAST, OUR FUTURE, OUR HISTORY & OUR DREAMS











# 10 YEARS IN A ROW







**TOP  
WORK  
PLACES  
2024**

**TIMES UNION**  
[timesunion.com](https://timesunion.com)

**Townsend Leather**

# TOP WORKPLACES WINNER

For over 10 years now, Townsend Leather has been winning awards for our culture and who we are to each other and our community. This year we were recognized as a Top Workplace, a Best Place to Work, and a Top Work Place by USA Today, and we also received multiple specialty awards for honors such as purpose & values, innovation, and leadership.

Read more about our award and the pride we have for our company culture:  
[townsendleather.com/10-years-of-being-named-top-workplace](https://townsendleather.com/10-years-of-being-named-top-workplace)





LEATHER

townsend  
LEATHER

PR

ALL  
ARE  
WELCOME  
HERE

Love is Love



townsend®  
LEATHER





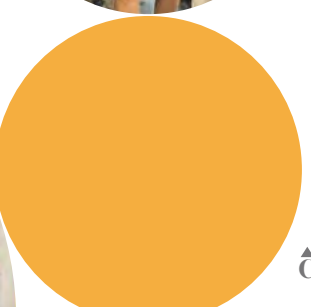
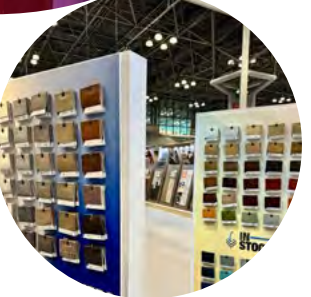
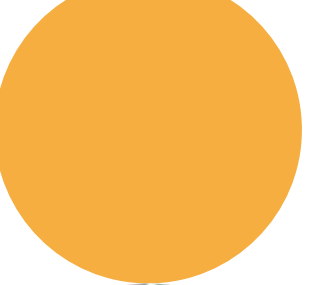
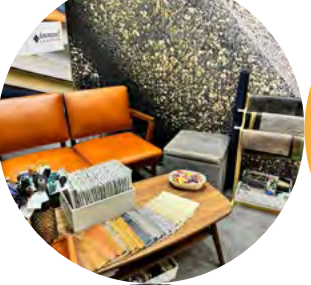


## **ALL ARE WELCOME HERE**

Townsend has always stood for togetherness and each year Pride month is a moment for us to put specific focus on how we include, how we support, and how we make ourselves visible to those who are so often pushed to the outsides and marginalized. We put pride in our hands and on our walls with new “All are welcome here” pens and plenty of posters. Everything was kicked off at a boiling hot summer fest next to the pond on our campus. Being visible, being loud, being together... matters.

Read more:  
[townsendleather.com/pride-2024](https://townsendleather.com/pride-2024)







## THE LAB GASTROBUB

Townsend provided The Lab Gastropub Antique Legends Whiskey Tan leather for bench top seating and club chairs.



54

## ‘BRAG BOOK’ PREVIEW

SNEAK PEEK! Our “Brag Book” Edition 1, is almost complete. This is a beautiful book of leather application photos from over the years, to serve as inspiration or to delight. Contact us at [info@townsendleather.com](mailto:info@townsendleather.com) to get your hands on one when it is printed.





**SEEN:** Townsend Leather's Stacy Garcia®  
Sassolino Pebble Eucalyptus on upholstered  
*Quintus* Sienna Barstool.





**SEEN:** Chair with Townsend Leather's Expressions Cowhide Medium Double Diamond Stitches at Wynn Las Vegas Hotel Resort.



**SEEN:** *Luxe Interiors + Design's* featuring  
Townsend Leather's Mesa Gaufrage  
Ponderosa Pine in Lace Weave pattern







**SEEN:** Our Middle Eastern Collection  
Aniline Gaufrage in Arabesque for a  
*Cimmarron Handbags* tote



**SEEN:** *Bronco* interior with Artesano Woven Dutch Cocoa on seats and middle console from Townsend Leather











Business Aviation Magazine sought out Townsend Leather to showcase our unparalleled Customer Service approach. Our very own Tricia Martin and Sherry Cocker sat for a Q&A where they gladly talked about Townsend Leather and all that we are. See the full article here, starting on page 38, [https://issuu.com/bizavmedia/docs/bam031\\_autumn\\_2024](https://issuu.com/bizavmedia/docs/bam031_autumn_2024)





 *townsend*<sup>®</sup>  
LEATHER





**WE LOVE TO CONNECT, DISCUSS, AND EXPLORE -  
PLEASE CONTACT US ABOUT ANYTHING**

**WWW.TOWNSENDLEATHER.COM**

[INFO@TOWNSENDLEATHER.COM](mailto:INFO@TOWNSENDLEATHER.COM) 518.762.2764

