

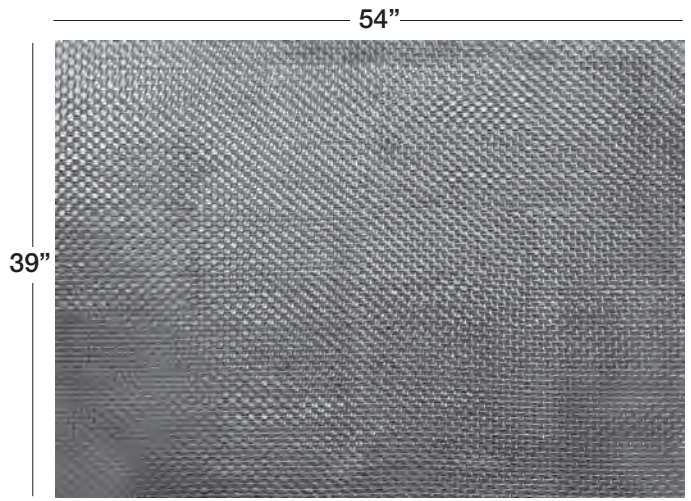
# ARDEN WEAVE (SG-ARD)

Available In: Sides

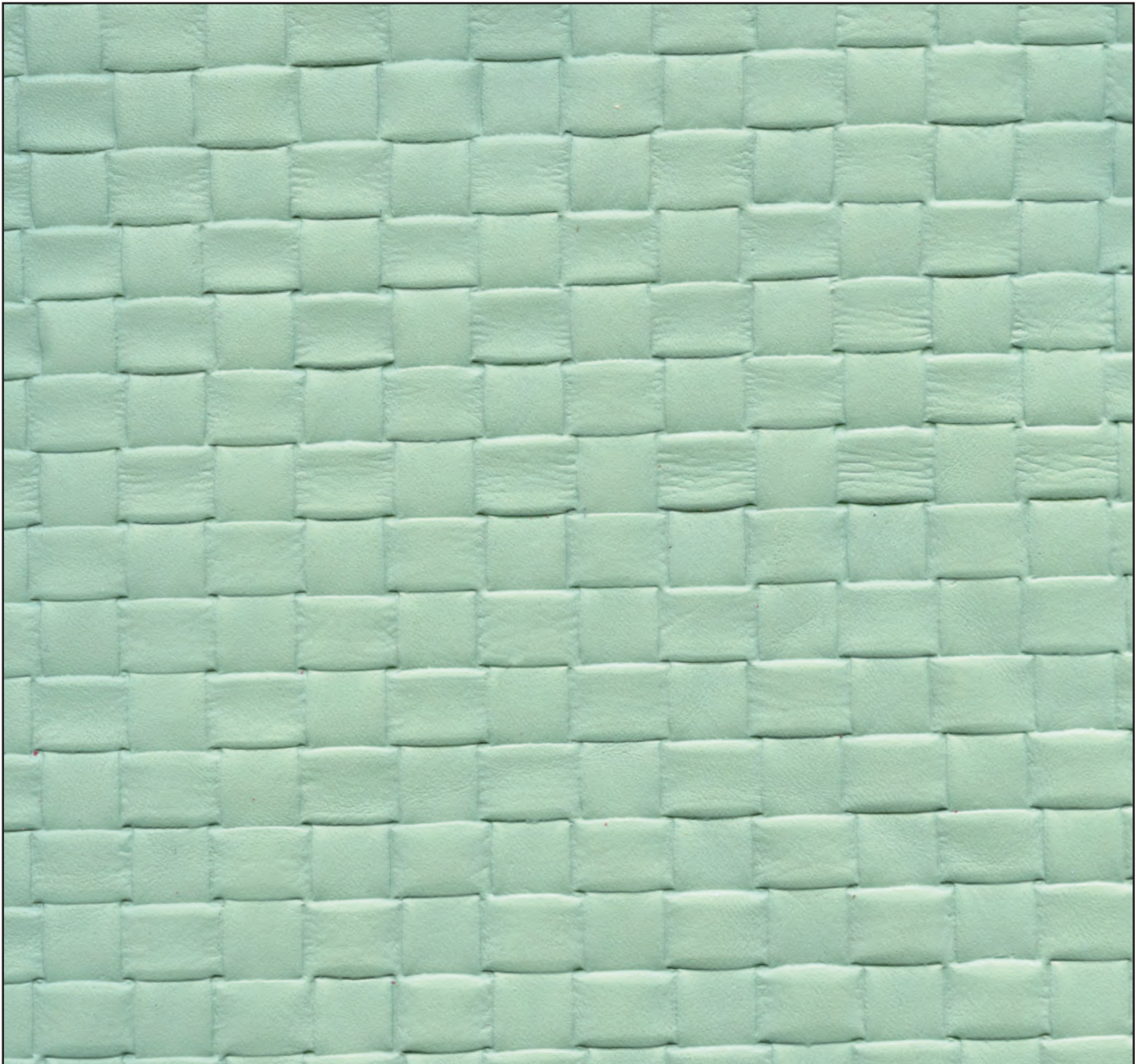
Noticeable Matchline: Yes

Directional: Yes

Plate Dimensions: 54"W x 39"H



*Direction of pattern on plate. Not to scale.*



Pattern and color shown at actual scale.

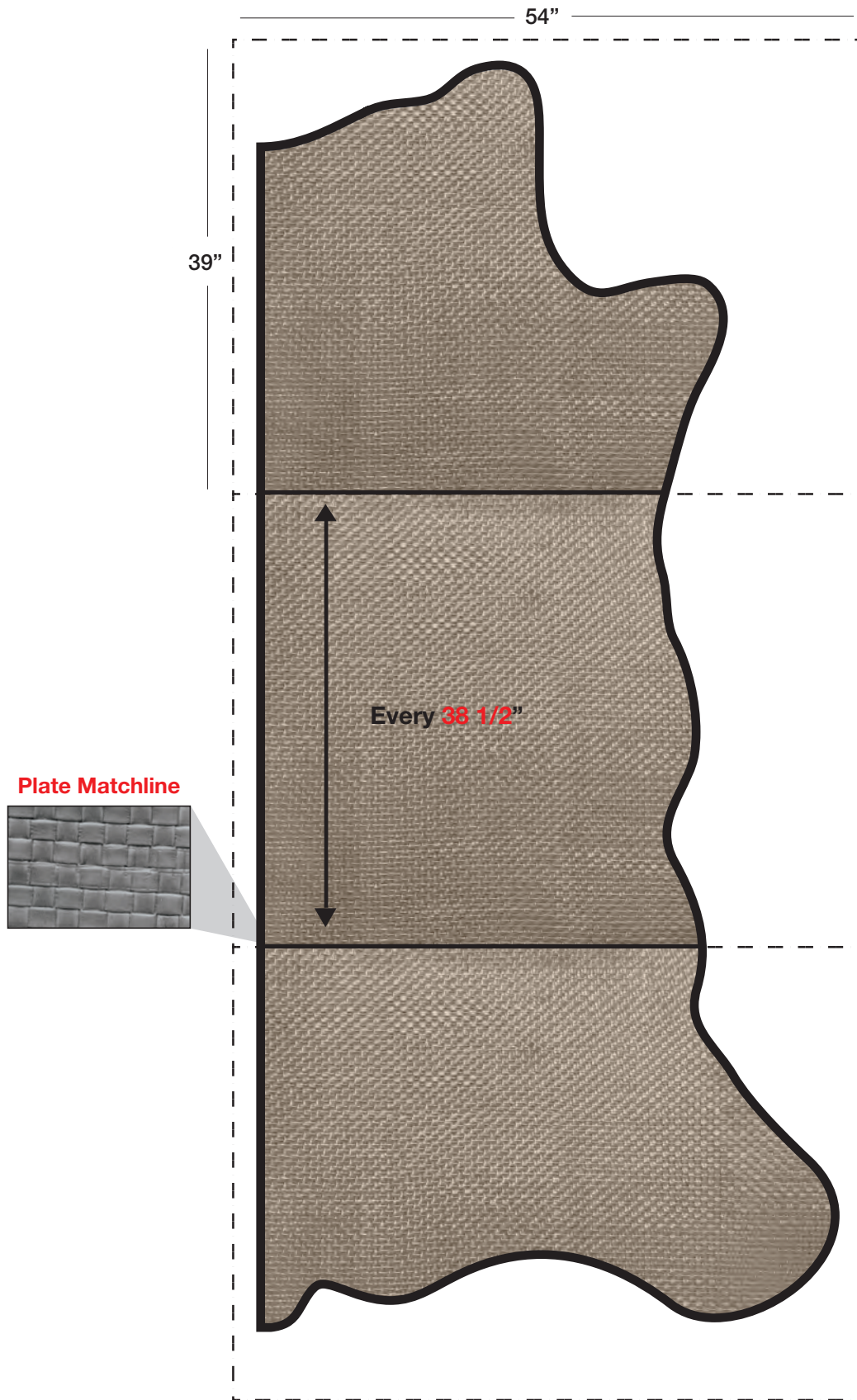
[www.townsendleather.com](http://www.townsendleather.com)

**GEOMETRIC**

# Cowhide Side

25-30 SF Average

# ARDEN WEAVE (SG-ARD)



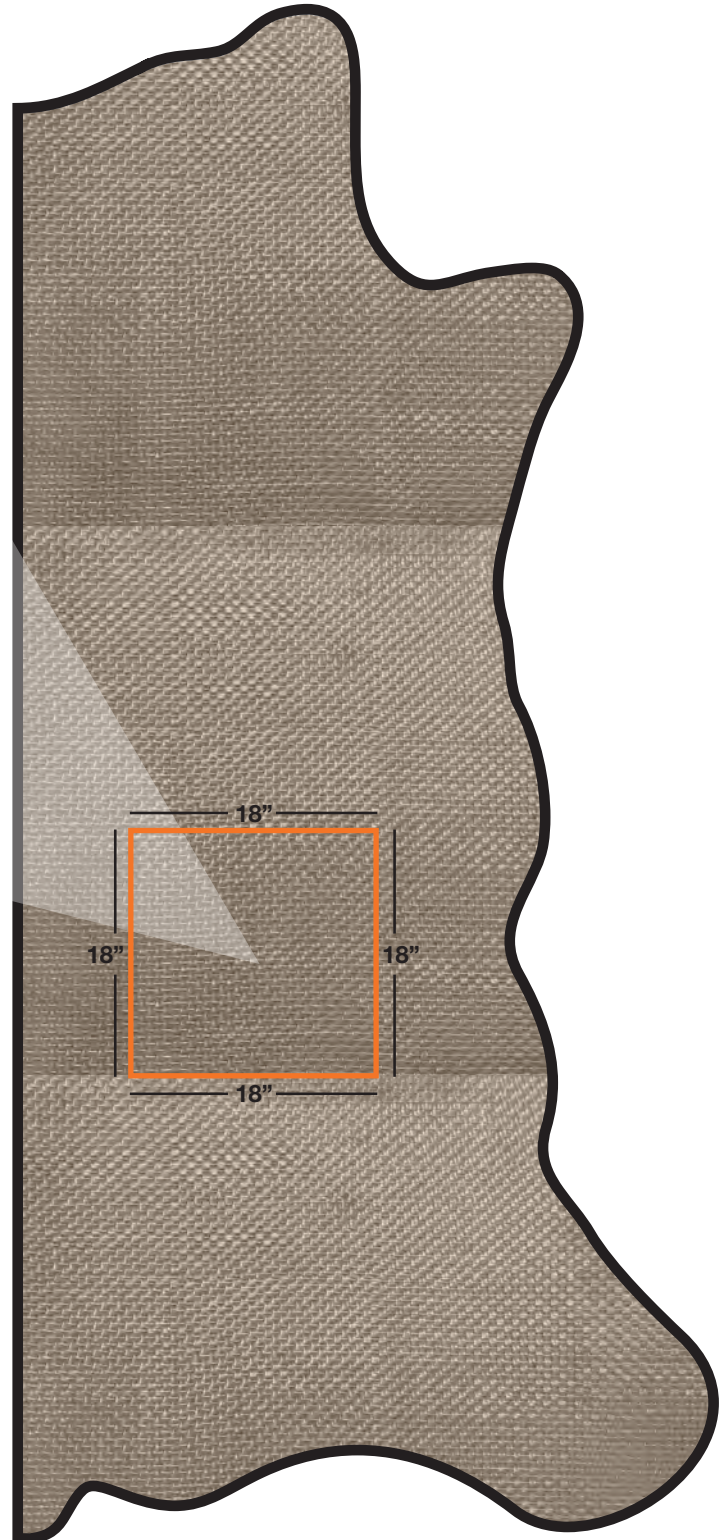
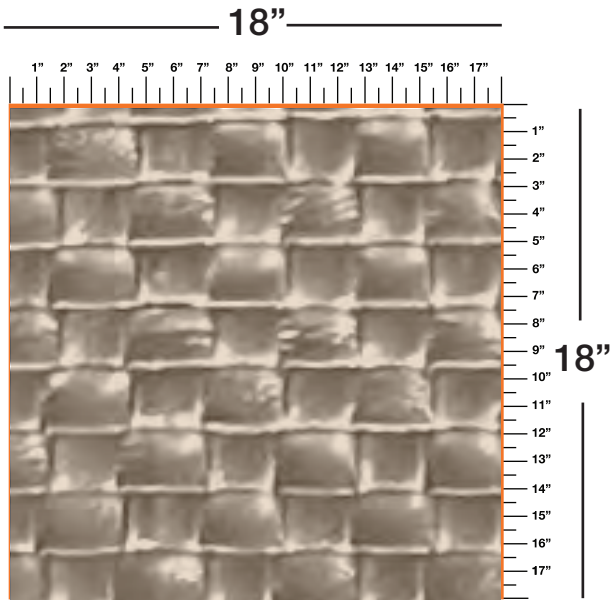
The above layout is to show approximate areas where the embossing matchline may be present. Please note, however, that because each side is unique and sides vary in shape and size, there will be slight differences in exactly where the embossing pattern falls on each side. This diagram is intended to provide a general representation of where the pattern will be printed onto the side.

# Cowhide Side

25-30 SF Average

# ARDEN WEAVE (SG-ARD)

## Pattern Repeat



The above layout is to show approximate areas where the embossing matchline may be present. Please note, however, that because each side is unique and sides vary in shape and size, there will be slight differences in exactly where the embossing pattern falls on each side. This diagram is intended to provide a general representation of where the pattern will be printed onto the side.