

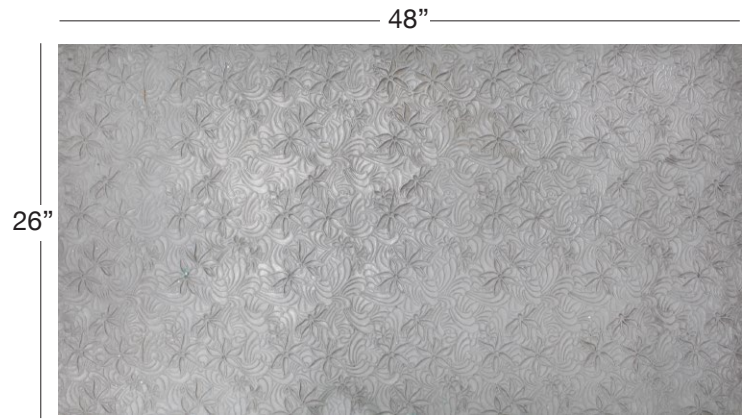
POINSETTIA (PON)

Available In: Hides

Noticeable Matchline: No

Directional: No

Plate Dimensions: 48"W x 26"H



Direction of pattern on plate. Not to scale.



Pattern and color shown at actual scale.

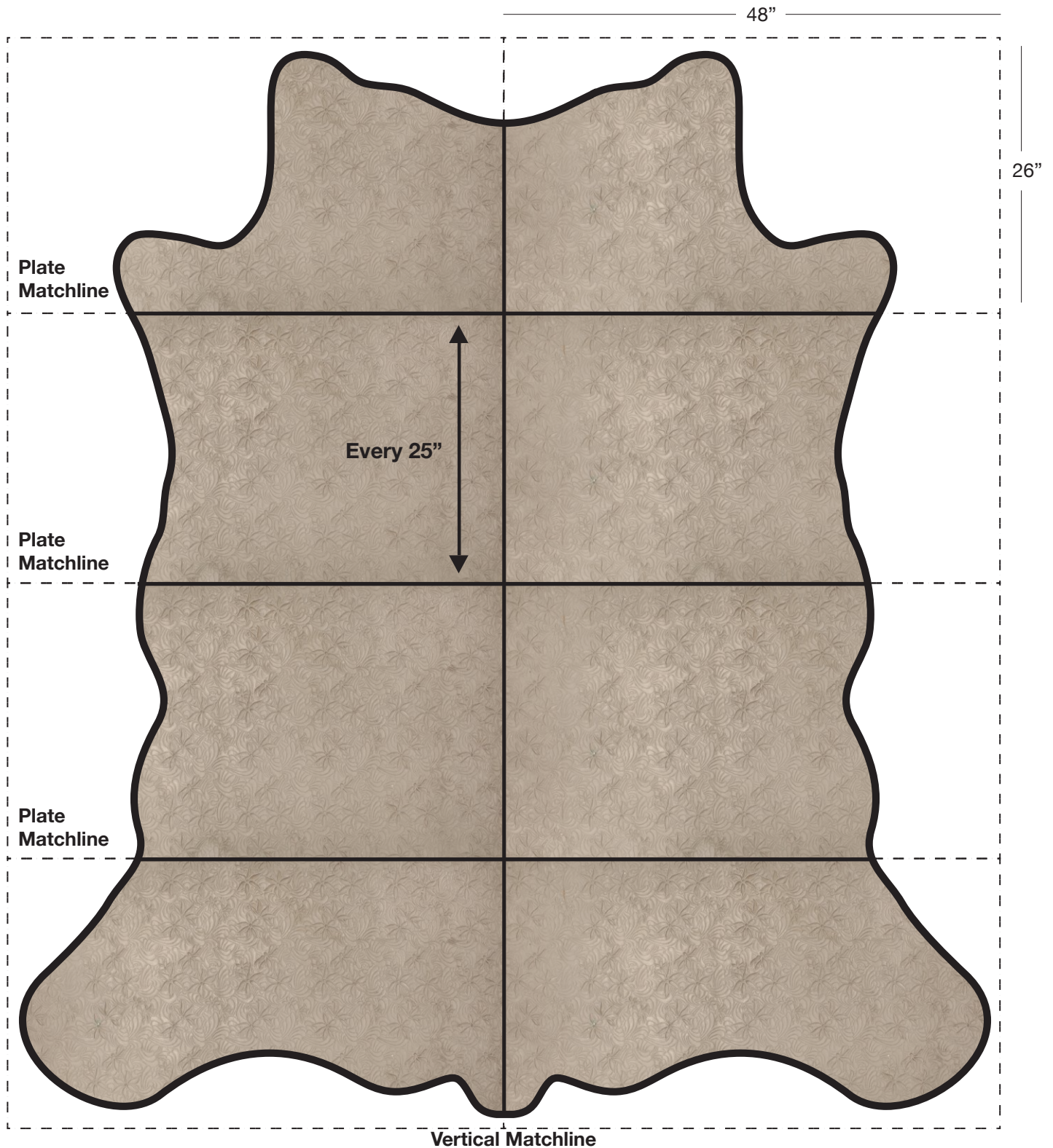
www.townsendleather.com

BOTANICAL

Full Cowhide

55-60 SF Average

POINSETTIA (PON)



The above layout is to show approximate areas where the embossing matchline will be present, if noticeable. Please note, however, that because each hide is unique and hides vary in shape and size, there will be slight differences in exactly where the embossing pattern falls on each hide. This diagram is intended to provide a general representation of where the pattern will be printed onto the hide.



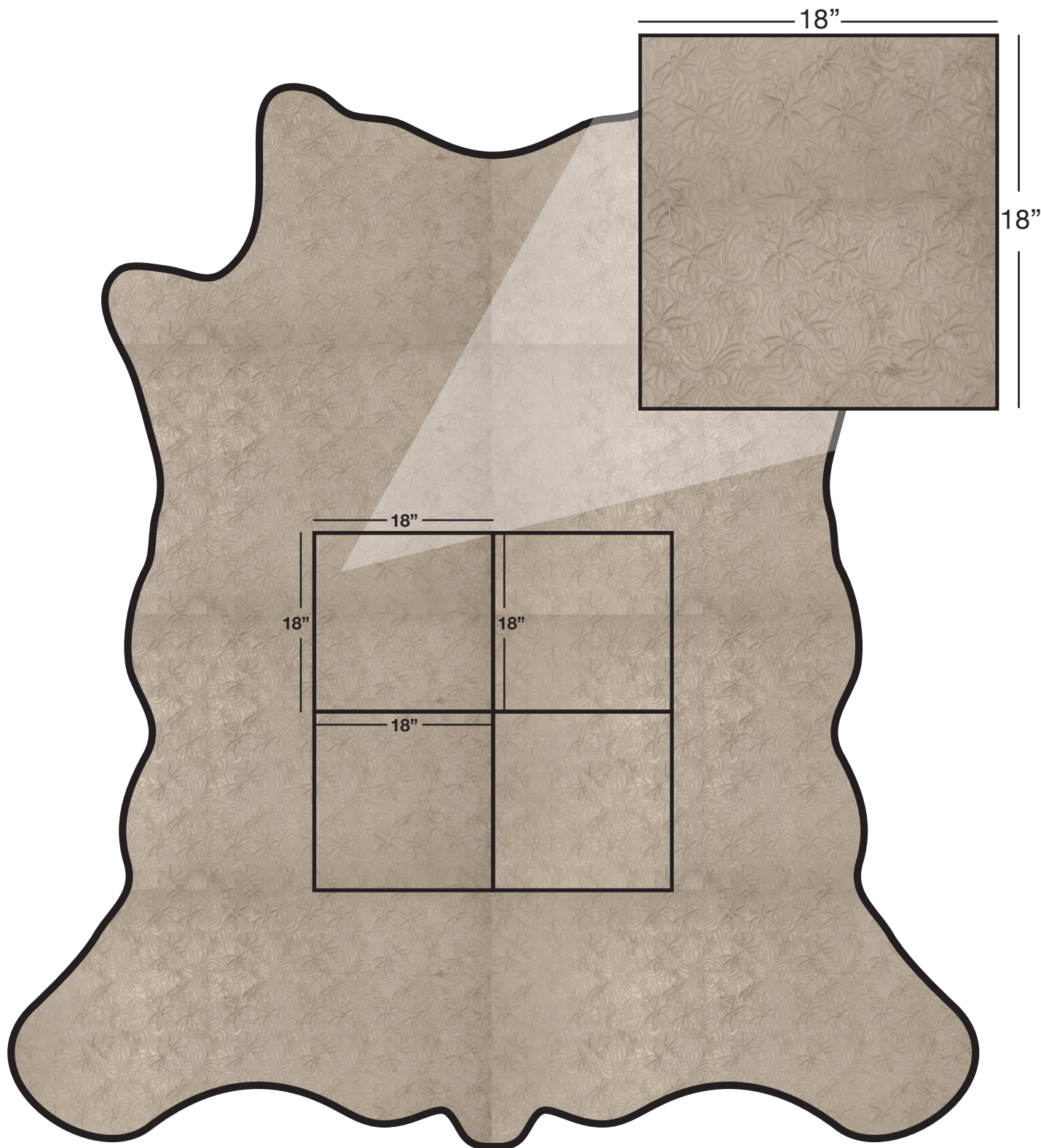
BOTANICAL

Full Cowhide

55-60 SF Average

POINSETTIA (PON)

Pattern Repeat



The above layout is to show approximate areas where the embossing matchline will be present, if noticeable. Please note, however, that because each hide is unique and hides vary in shape and size, there will be slight differences in exactly where the embossing pattern falls on each hide. This diagram is intended to provide a general representation of where the pattern will be printed onto the hide.



BOTANICAL