



# STEERHIDE (ST)

**Available In:** Hides

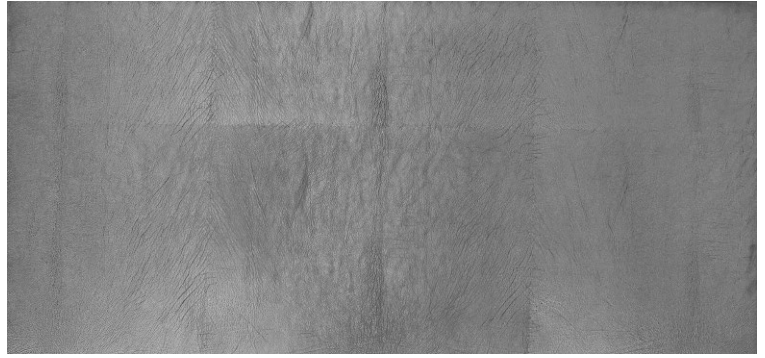
**Noticeable Matchline:** No

**Directional:** No

**Plate Dimensions:** 53 1/2"W x 25 1/4"H

25 1/4"

53 1/2"



*Direction of pattern on plate. Not to scale.*



Pattern and color shown at actual scale.

[www.townsendleather.com](http://www.townsendleather.com)

**GRAIN TEXTURE**



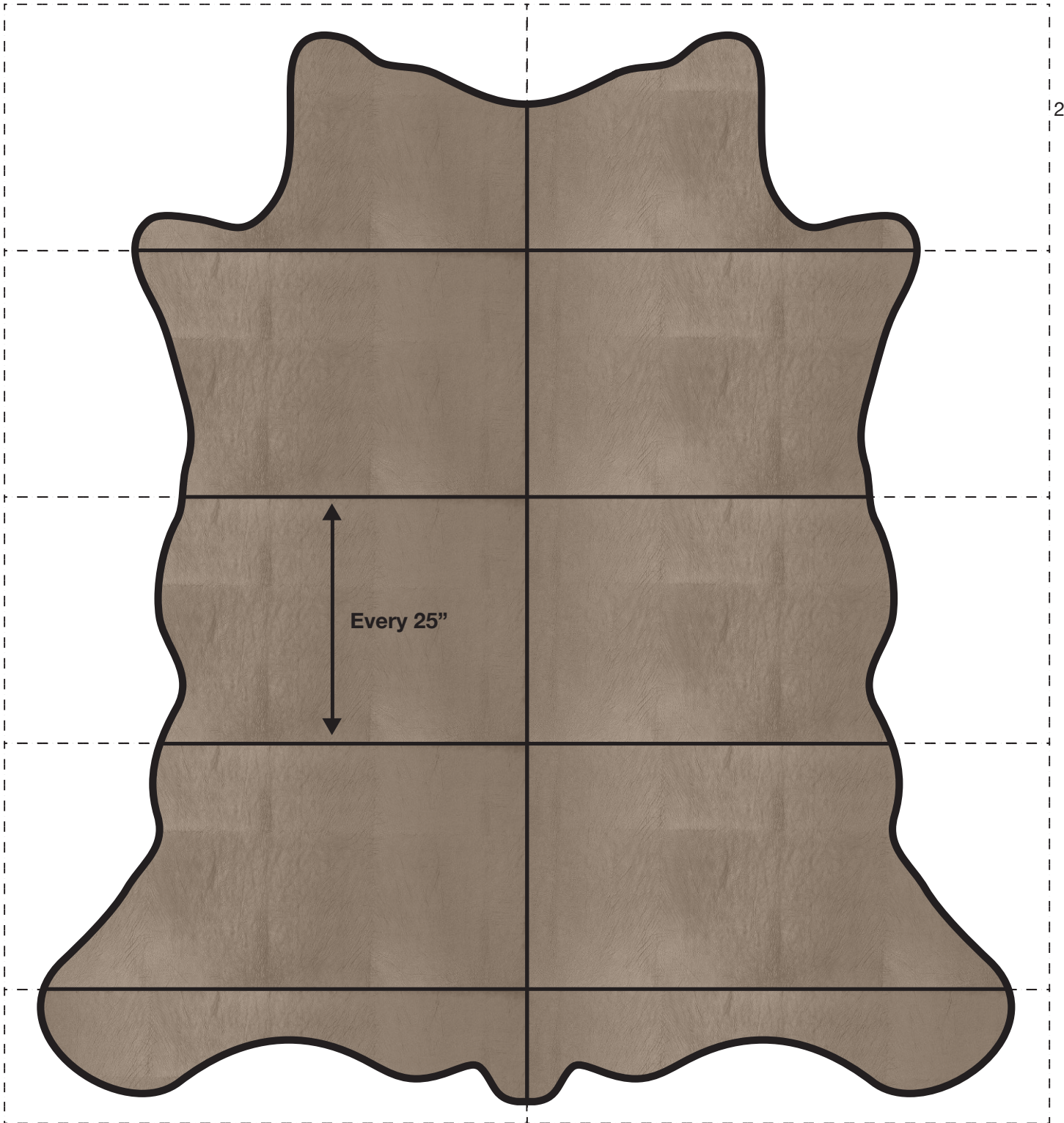
# Cowhide Hide

55-60 SF Average

# STEERHIDE (ST)

53 1/2"

25 1/4"



The above layout is to show approximate areas where the embossing matchline may be present. Please note, however, that because each side is unique and sides vary in shape and size, there will be slight differences in exactly where the embossing pattern falls on each side. This diagram is intended to provide a general representation of where the pattern will be printed onto the side.



## GRAIN TEXTURE