



# SHIMMERING SUEDE COLLECTION

## RIDE THE WAVES

PRODUCT CHARACTERISTIC SHEET

### PRODUCT DESCRIPTION:

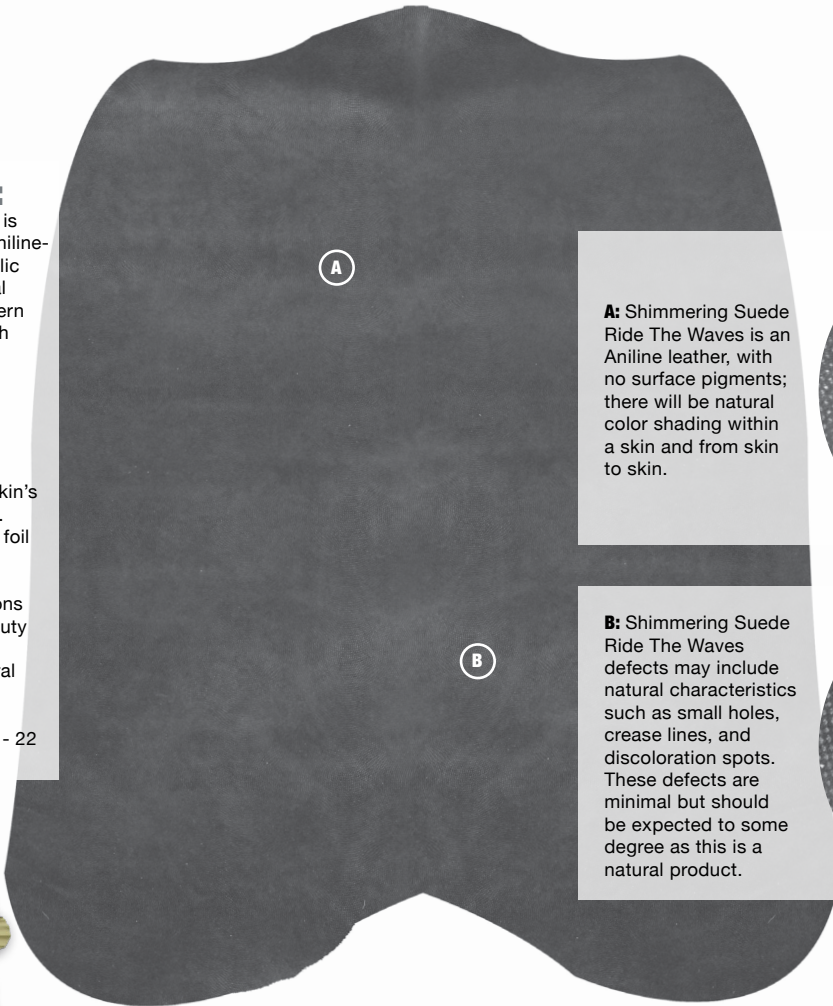
Shimmering Suede Ride The Waves is genuine split suede that has been aniline-dyed and has received a solid metallic colored foil transfer to create its final look. The foil transfer creates a pattern that is fluid and detailed even though small in scale.

### CHARACTERISTICS:

Natural variations in color, tone and texture are part of the beauty of this leather artwork and highlight each skin's unique history and natural markings. The pattern has been imparted by a foil transfer.

As an Aniline leather, natural variations in color and tone are part of the beauty of this natural leather and highlight each skin's unique history and natural markings.

These are small skins, averaging 18 - 22 SF in size.

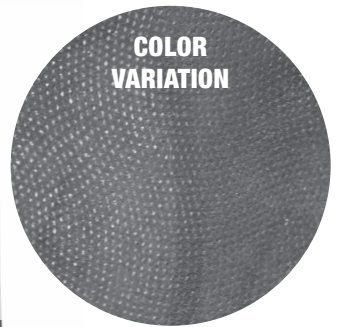


A

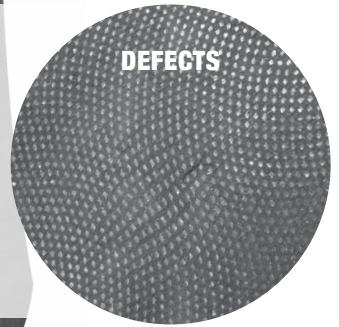
**A:** Shimmering Suede Ride The Waves is an Aniline leather, with no surface pigments; there will be natural color shading within a skin and from skin to skin.

B

**B:** Shimmering Suede Ride The Waves defects may include natural characteristics such as small holes, crease lines, and discoloration spots. These defects are minimal but should be expected to some degree as this is a natural product.



COLOR VARIATION



DEFECTS



STANDARD COWHIDE

SUEDE DOUBLE BUTT



Many patterns and styles are available, see [www.townsendleather.com](http://www.townsendleather.com) and search for Shimmering Suede for current selections.

PRODUCT NAME	PREFIX	CATEGORY	EMBOSSED	HAND-RUBBED OR HAND-TIPPED	MACHINE-ANTIQUED	WAXED	AVERAGE THICKNESS	PERFORMANCE RATING	AVERAGE SIZE
Shimmering Suede Ride The Waves	SHS-RTW	Aniline	No, but patterned effect is applied by foil transfer	No	No	No	1.2 - 1.4 mm	2 of 5	Skins of 18 - 22 SF