

SHIMMERING SUEDE COLLECTION

PIZZAZZ

PRODUCT CHARACTERISTIC SHEET

PRODUCT DESCRIPTION:

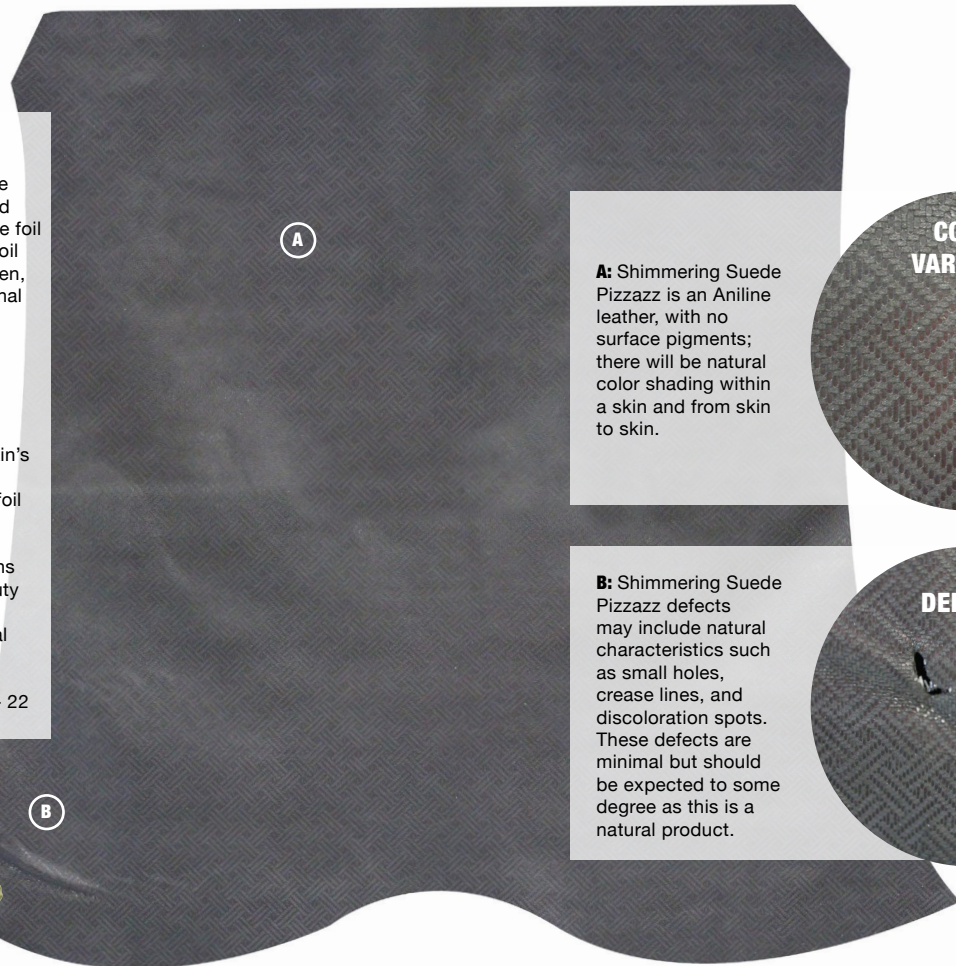
Shimmering Suede Pizzazz is genuine split suede that has been aniline-dyed and has received a solid tone-on-tone foil transfer to create its final look. The foil transfer, which has a semi-matte sheen, highlights this modern take on diagonal basket weave.

CHARACTERISTICS:

Natural variations in color, tone and texture are part of the beauty of this leather artwork and highlight each skin's unique history and natural markings. The pattern has been imparted by a foil transfer.

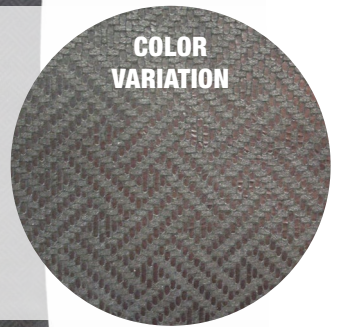
As an Aniline leather, natural variations in color and tone are part of the beauty of this natural leather and highlight each skin's unique history and natural markings.

These are small skins, averaging 18 - 22 SF in size.

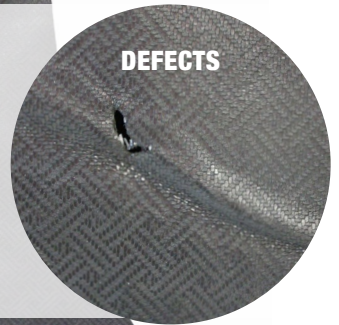


A

A: Shimmering Suede Pizzazz is an Aniline leather, with no surface pigments; there will be natural color shading within a skin and from skin to skin.



B: Shimmering Suede Pizzazz defects may include natural characteristics such as small holes, crease lines, and discoloration spots. These defects are minimal but should be expected to some degree as this is a natural product.



PRODUCT NAME	PREFIX	CATEGORY	EMBOSSED	HAND-RUBBED OR HAND-TIPPED	MACHINE-ANTIQUED	WAXED	AVERAGE THICKNESS	PERFORMANCE RATING	AVERAGE SIZE
Shimmering Suede Pizzazz	SHS-PIZ	Aniline	No, but patterned effect is applied by foil transfer	No	No	No	1.2 - 1.4 mm	2 of 5	Skins of 18 - 22 SF