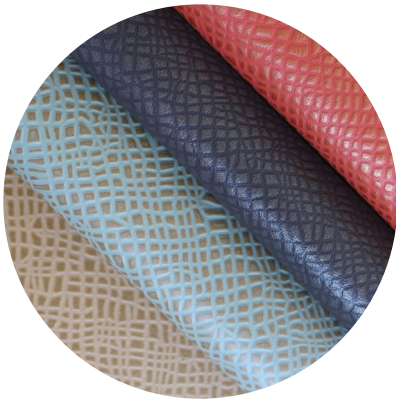


KINETIC COWHIDE

PRODUCT CHARACTERISTIC SHEET



PRODUCT DESCRIPTION:

Travel beyond the boundaries of traditional linework and flat planes with Kinetic, a non-directional and multi-dimensional design which radiates with a pulsating sense of energy.

This organic-inspired leather emboss is hand-tipped with a subtle sheen which beautifully highlights the raised surfaces of the pattern. Kinetic is available in 6 standard energetic and enticing colorways.

CHARACTERISTICS:

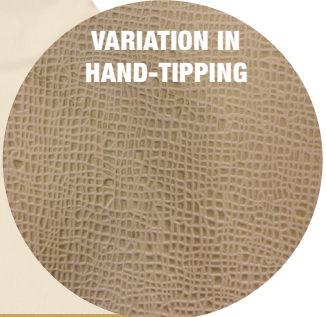
Kinetic Cowhide is a Finished Leather and hand-rubbed with tone-on-tone tipping colors. As a Hand-Tipped leather, there will be some variation in coloration and boldness of the tipping effect within a hide and from hide to hide.

Durability and built-in protection from soiling, fading, and wear.

More consistency and less apparent defects than found in Aniline leather.

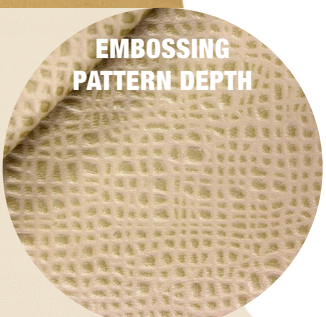
A

A: Kinetic Cowhide is a Hand-Tipped leather, therefore there will be some variation in coloration and boldness of the tipping effect within a hide and from hide to hide, due to its hand-crafted nature.



B

B: Leather is a natural product, therefore it may take the embossing effect differently from area to area and therefore, there will be some variation in the depth of the embossed pattern print. This variation is controlled as much as possible.



PRODUCT NAME	PREFIX	CATEGORY	EMBOSSED	HAND-RUBBED OR HAND-TIPPED	MACHINE-ANTIQUED	WAXED	AVERAGE THICKNESS	PERFORMANCE RATING	AVERAGE SIZE
Kinetic Cowhide	SG-KN	Finished	Yes	Yes	No	No	1.0 - 1.2 mm	4 of 5	Whole Hides of 55 - 60 SF