

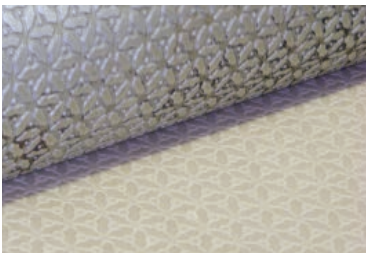
GAUFRAGE ROLLER EMBOSING

This method of embossing is through the technique of a Gaufrage Calendar Roll, where the design impression is transferred to the leather by an engraved roller under high heat and low pressure for a soft, natural hand without pattern match lines.

Townsend owns one of the largest collections, in the U.S., of gaufrage rollers for leather. With over 140 calendar rolls, this includes everything from small grains to decorative and abstract designs. Most of the Townsend Leather product line can be embossed with gaufrage calendar rolls.

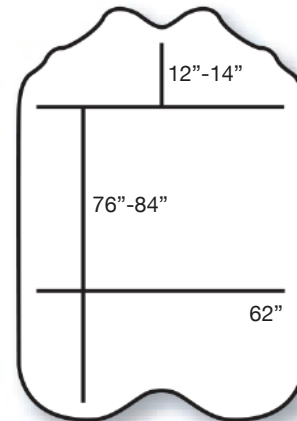
This is a highly customized capability and therefore we treat every project as unique. Your Townsend Representative will help walk through the process of selecting the perfect leather, base color, hide size, and other requirements based on your project needs.

Please note: this is a basic reference tool sheet only; every leather and image will be slightly different.



Center Cut Hide

40-45 SF Average



SEE ARTWORK REQUIREMENTS
ON BACKSIDE

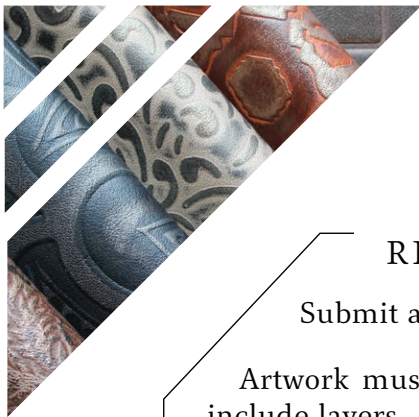
INFORMATION

Gaufrage patterns are offered in Center Cut Hides (40-45 SF) or Cowhide Sides (25 SF) with absolutely no pattern match line.

Application and upholstery information is highly recommended so Townsend may better assist with pattern direction and cut pattern sizes.

Strike-off for approval is required prior to production.

Similar to textile rolls, these decorative gaufrage patterns range in a variety of widths allowing leather hides to pass through and create clean and efficient use of a hide for upholstery application



ARTWORK REQUIREMENTS

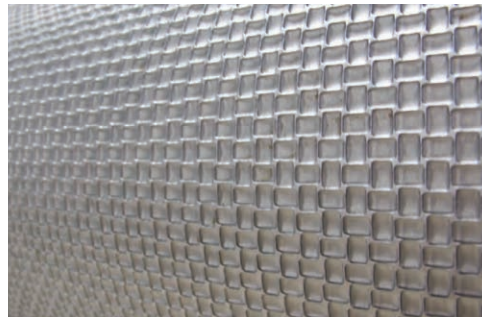
Submit artwork at 100%.

Artwork must be flattened, must not include layers.

Accepted File Formats: PDF, EPS, or AI.

Customized gaufrage patterns can be developed, if required. Check with your Townsend Representative for lead time, cost and options.

Repeated Designs: If artwork is a repeated design, be sure it repeats properly in the direction you wish.



VECTOR ARTWORK

Excellent for creating and personalizing leather pieces with names, logos, small image, etc. and allowing for resizing and precise detail.

Vector file types include:

- Adobe Illustrator (AI)
- Encapsulated Postscript (EPS)
- Adobe Portable Document Format (PDF)
- JPEG, PNG or GIF files are not forms of vector artwork, as these do not allow for editing text and graphics.

GRAPHIC DESIGN DEPARTMENT

Townsend Leather has an highly experienced Graphic Design Department that will assist you through the gaufrage calendar embossing process. Charges may apply for customizing artwork and support.

